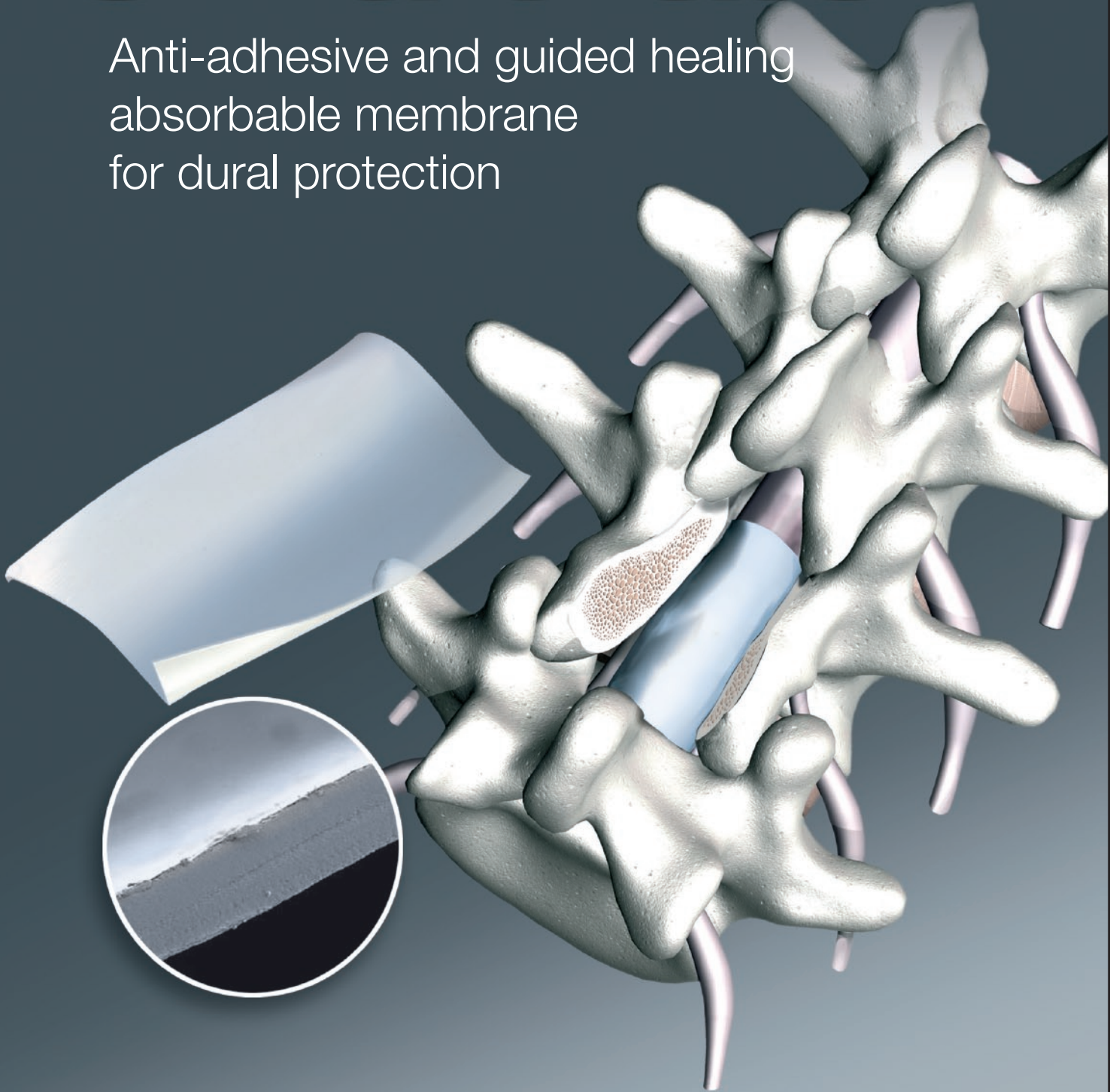


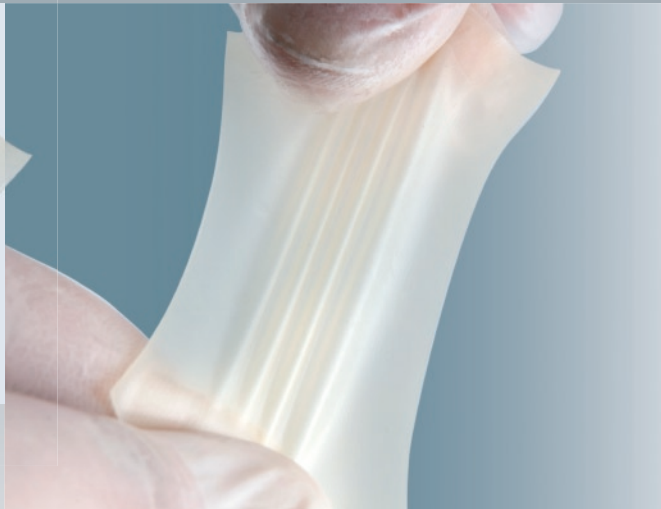
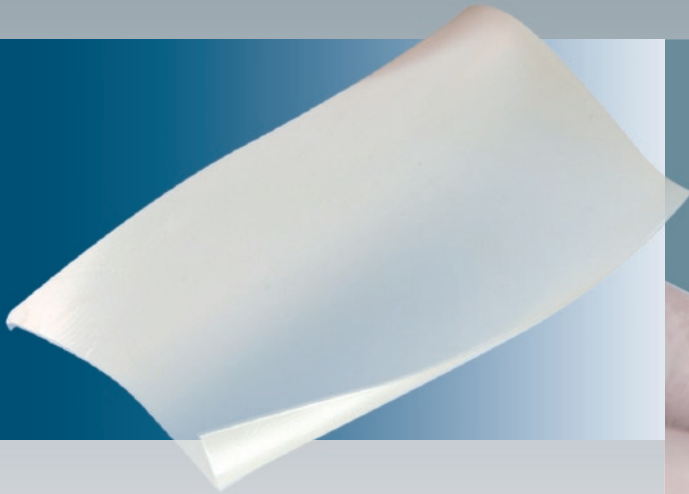
# SmartPatch™

Anti-adhesive and guided healing  
absorbable membrane  
for dural protection



# SmartPatch™

Anti-adhesive and guided healing absorbable membrane for dural protection.



## Technical specifications

Membrane made of xenogenic acellular purified collagen.

**Haemostatic** properties on epidural vessels.

**Guided healing** : allows natural scars formation separated from the dura, act as a barrier against fibroblasts.

**Resistant** : can be used as patch to repair dural tears or protect dural suture: can be stacked with biological glue or sutured on the dura.

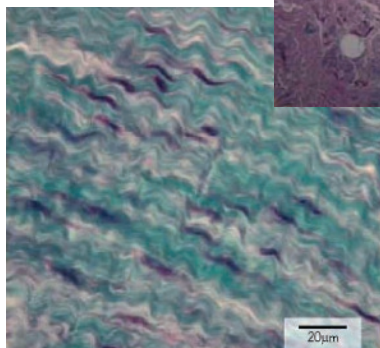
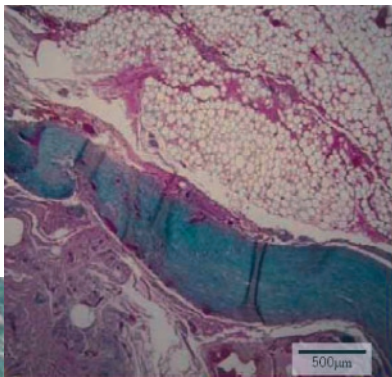
**Lucent when wet**, allows visual control of the underlying dura.

**Supple after hydration** : wraps naturally the dural sac and the nerve roots.

**Absorbable** in 3 months, without inflammatory reaction.

Histological analysis (x4)  
3 months after implantation.

The membrane remains as a network of aligned collagen fibers. Its position as a barrier between the tissues to separate the physiological anatomical planes. No inflammatory reaction detected.



Histological analysis (x40)  
3 months after implantation of SmartPatch.

Fibroblasts are aligned along the collagen fibers of the membrane : It has acted as a barrier. We observe a guided tissue regeneration with no inflammatory reaction detected.

## Indications

Prevention of epidural fibrosis in spinal surgeries: discectomy, laminectomy with or without fusion. Ease any revision surgery as it maintains a virtual space between the dura and the post-operative scar.

Protection and/or repair of dural tears.

## Presentation

Available in 2 sizes,  
in a double peel package,  
sterilized by irradiation :

20 x 30mm  
Adapted to limited  
dural tear repairs  
or adhesion prevention  
in small exposed surfaces.

40 x 60mm  
Adapted to preventive dural protection on wider  
exposed surfaces.

Manufactured in France.



Distributed by :

**SmartSpine**  
www.smartspine.fr

**SmartSpine SAS**

186, Bd Pasteur - Centre d'Activité Pasteur

F-13730 Saint Victoret - France

Phone: +33 4 42 34 63 89 - Fax : +33 4 88 71 44 30

info@smartspine.fr

www.smartspine.fr